



IMPACTMS NOW

MADDIE
KASYDEE
SIDNEY



WHAT IS MULTIPLE SCLEROSIS



Chronic, unpredictable disease in the brain, spinal cord and optic nerves (CNS)

It is an immune-mediated disorder which means the immune system incorrectly attacks healthy tissue in the Central Nervous System

WHAT

WE DO

A large, irregular orange jagged border that encloses the mission statement text, resembling a hand-drawn or stamped outline.

Our mission is to **raise awareness** about Multiple Sclerosis with our community fundraising efforts. We believe **education** others will ultimately find a cure for MS and many other autoimmune diseases

WHO WE ARE

- Founded by Angie Parham and Brian Jones in February 2016
- Our first event was Shooting for a Cure in 2015 before we were officially made a non-profit organization
- Started ImpactMS Now because of the difficulty to receive sponsorships and donations without the official title and 990



HOW WE DO IT



Shoot for a Cure

ImpactMS Now Event

Proceeds go to the National MS Society and Scholarship Program



Bike MS

National MS Society Event

Proceeds go to the National MS Society



Scholarships

3 \$1,000 scholarships given to selected high school seniors in 2017

ImpactMS Now Sponsored Scholarships

FINANCIALS 2017

Total Funds Raised: \$27,297.80

- Raised through the support of our sponsors and donations from Shooting for a Cure, North TX Giving Day, Pancake Breakfast, Painting with a Purpose, Karaoke Night, and various other fundraisers.

Total Expenses: \$25,390.48

- Fundraising expenses - Shooting for a Cure expenses, Bike MS team expenses, Super Bowl Pool winner payouts, Misc. business expenses - \$9,340.58
- Scholarships awarded - \$3,000
- National MS Society - \$11,649.90
- Mindset Charities - \$1,000
- St. Jude's - \$400

990 and other
financial documents
easily available



MEET THE LEADERS



Angie Parham

President/
Co-founder



Brian Jones

Chief Financial
Officer/ Co-founder



Maddie Parham

Social Media/
Marketing

MEET THE LEADERS



Aaron Emma
Volunteer
Coordinator



Tami Ryan
Community
Development



Vicki Stewart
Sponsor and
Donor Relations

WHO

WE DO IT FOR



Diagnosed with
Multiple Sclerosis in
August 2010

WHY
OTHERS DO IT
.....

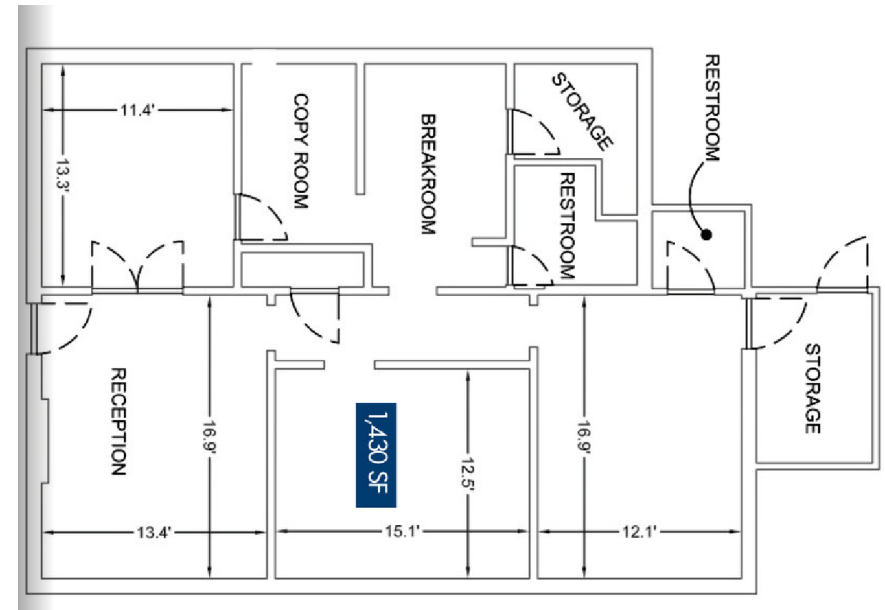
Bike MS

WHAT WE NEED

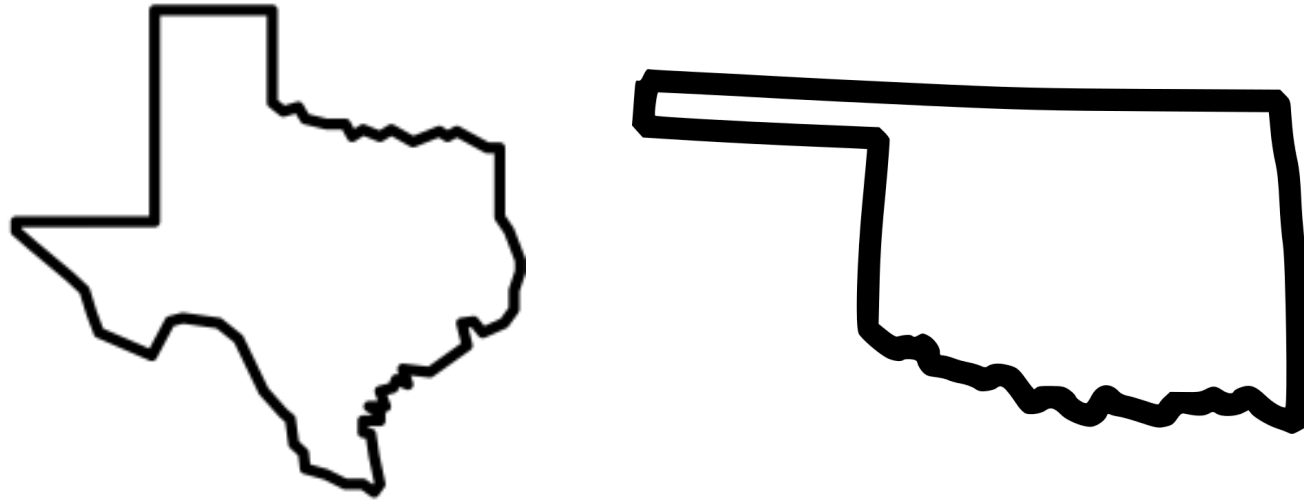
\$120,000

\$30,000/yr x 3 years for rent

\$30,000 for office furniture, office supplies, and paid advertisement to reach a target larger audience



HOW WE'LL USE IT

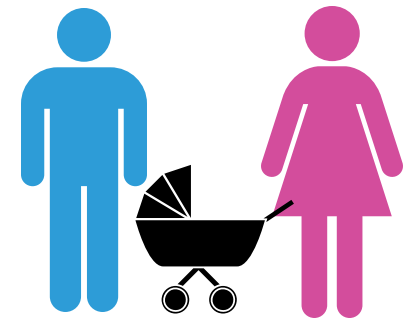
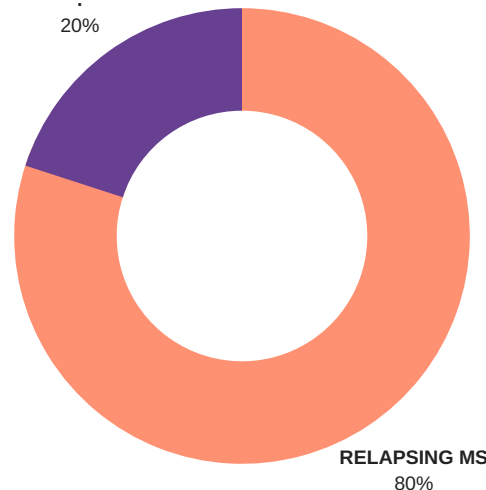


Our goal is to **EXPAND** our scholarship program from \$1,000 to **\$5,000** to 5 eligible high school seniors in **North Texas and Oklahoma** by 2022.

An official office space will allow an expansion of our scholarship program which will impact younger generations to become more **aware** about MS with hopes to **strengthen the fight** against this disease.

WHY US

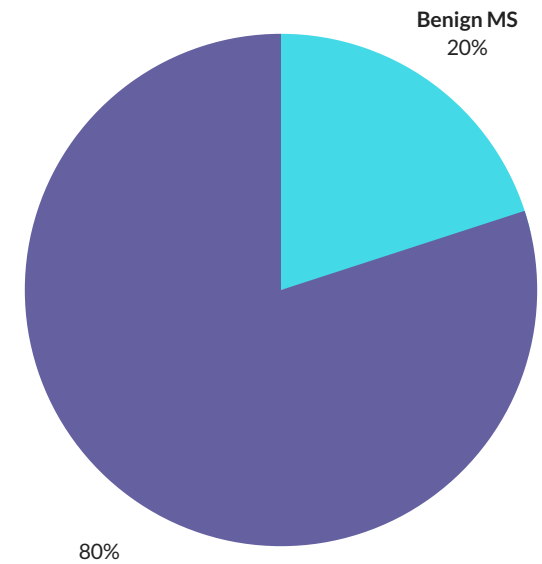
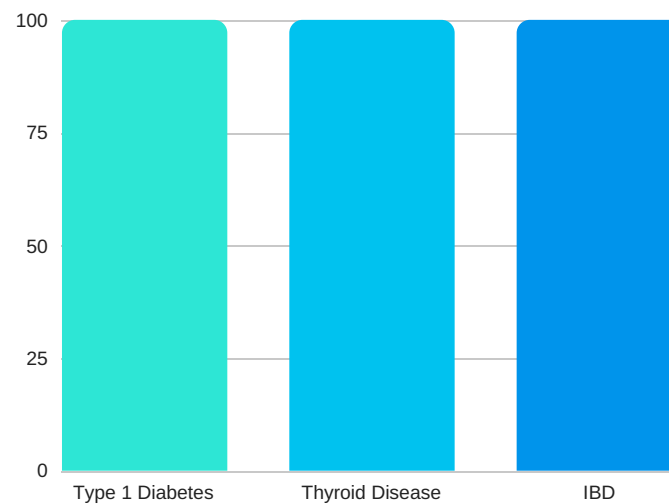
Nearly **2.5 million** people have been diagnosed with MS worldwide with an estimated **400 thousand** of these cases occurring in the United States.



MS can be genetic



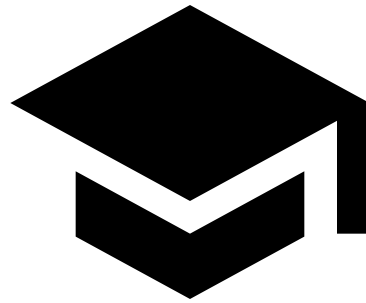
The ratio of women
with MS to men
with MS is 2:1



WHY US



*raising
awareness*



*educating
younger
generations*



*raising
money for
a cure*

Thank You!